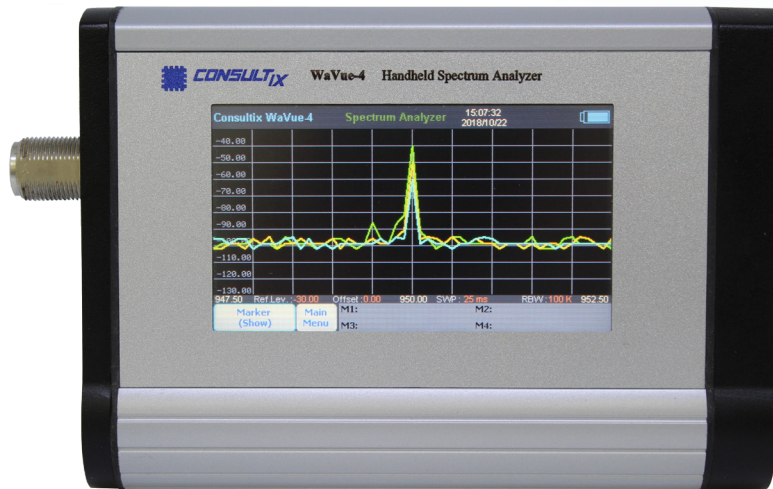




Consultix WaVue™-4 Spectrum Analyzer

Magnificently convenient, fast and efficient



As a technology leader dedicated to fulfill the niche requirements of telecom test users, Consultix provides field engineers & technicians with a compact cost-effective spectrum analyzer; the WaVue™-4. Employing state-of-the-art reception techniques, and combining features required for signal and interference analysis, this model is magnificently convenient and efficient for field missions as well as several lab applications. The tester is devised in an innovative modular concept saving user's CAPEX & enhancing logistics' cycle.

Smart

- DANL Performance: -115 dBm (100 KHz RBW)
- Interference Hunting Mode (Optional)
- Spectrogram / Waterfall Display
- Beeper Mode for Interference Location
- Long-Term Spectrum Logger
- User Friendly Touch Interface
- RF Accessories Available

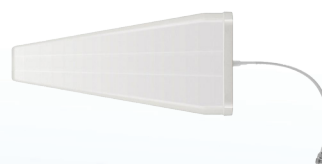
Fit

- Lightweight: 765g (1.7 Pounds)
- Heavy Duty Construction
- Industrial 4.3" Touch Screen
- RF & Shock Protection
- Industrial RF Ports
- Global Stock Delivery
- Quick Service Programs



Specification	
Frequency	
Measurement Modes	Spectrum Analyzer and Automatic Interference Logger Optional Spectrogram/Waterfall Display (Option: WaVue-4-K-H)
Frequency Band	400 MHz to 4000 MHz
Frequency Accuracy	2.5 ppm
Resolution Bandwidth (RBW)	100 KHz, 250 KHz and 500 KHz
Frequency Span	100 KHz to Full Span (3.6 GHz)
Sweep Time	100 ms / 100 MHz Span @ RBW = 500 KHz
Amplitude	
RF Input Impedance	50 Ω
Maximum RF Input Level without Damage	20 dBm
Sensitivity	-115 dBm (DANL @ 2 GHz, 100KHz RBW)
Maximum Measured RF Input	-25 dBm at 400 MHz to 1200 MHz -15 dBm at 1200 MHz to 4000 MHz
Overall Amplitude Accuracy	\pm 2 dB
Intermodulation Distortion and Spurious	
Sub-Harmonic Distortion	< -35 dBc
Second Harmonic Distortion	< -45 dBc
IF Rejection	Zero IF Technique
Image Rejection	35 dBc
Setup	
Simultaneous Traces	Up to 3
Markers	4 Markers & Delta Markers, Peak & Minimum Search
Interference Location Tone	Proportional Beep
Monitoring Mode	Automatic Interference Logger for Extended Period
Others	Pre-set Regional Bands List and Limit Line
Memory	
Type	Internal (1000 Traces) and External USB Storage
Save/Recall	Measurements and Screenshots
Battery and Power Supply	
Battery	Li-ion 3400 mAh
Battery Operation Time	2.5 Hours at Continuous Operation
AC Charger	Input: 100-240 VAC, 50-60 Hz / Output: 12 VDC, 2A
Physical and Environmental	
Enclosure	Industrial and Heavy-duty
Display	4.3" TFT, LCD Touch Screen
Ports and Interface	N Type Female, 2 x USB and DC Input
External Dimensions	L180 x W118 x H36 mm
Weight	765 gm. Including Battery (1.7 lbs)
Operating Temperature	-10 to +50 C
Standard Package	Analyzer, Hard Carrying Case, AC Charger, Whip Antenna, Stylus Pen, Shoulder Strap with Shock Absorbers, Calibration Certificate and User Manual

In order to fulfil users' needs particularly for surveys and interference location, Consultix provides a full line of accessories to accomplish the mission. For more info Please contact our sales sales@consultixwireless.com



Find us:

Building 57A, 2nd district, 6th area, El-Teseen st.11835, New Cairo, Egypt.
+2 02 25647370 info@consultixwireless.com